

CYLINDRICAL TERMINAL

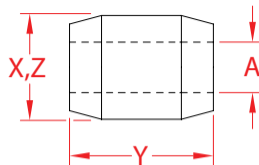
316 STAINLESS STEEL



Import



Precision
Machined



ITEM	A (wire)	BEFORE (swage)	AFTER (swage)	X (height)	Y (length)	Z (width)	WT (lb)	PACKAGING TYPE	EACH (qty)	INNER (qty)	CARTON (qty)	UPC
S0758-0001	1/16"	0.22"	0.19"	0.22"	0.22"	0.22"	0.01/100	POLYBAG	1	100	20,000	791506051015
S0758-0002	3/32"	0.25"	0.22"	0.25"	0.33"	0.25"	0.4/100	POLYBAG	1	100	5,000	791506051022
S0758-0003	1/8"	0.30"	0.25"	0.30"	0.42"	0.30"	0.6/100	POLYBAG	1	50	3,000	791506051039
S0758-0004	5/32"	0.38"	0.31"	0.38"	0.51"	0.38"	0.01	POLYBAG	1	25	2,500	791506051046
S0758-0005	3/16"	0.44"	0.38"	0.44"	0.64"	0.44"	0.02	POLYBAG	1	10	2,000	791506051053

NOTE:
ALL DIMENSIONS ARE NOMINAL (+/- 3%) AND ARE SUBJECT TO CHANGE WITHOUT NOTICE.